



Standard Test Method for Static Modulus of Elasticity and Poisson's Ratio of Concrete in Compression¹

This standard is issued under the fixed designation C 469; the number immediately following the designation indicates the year of original adoption or, in the case of revision, the year of last revision. A number in parentheses indicates the year of last reapproval. A superscript epsilon (ϵ) indicates an editorial change since the last revision or reapproval.

^{e1} NOTE—Adjunct references were corrected editorially in April 2006.

1. Scope

1.1 This test method covers determination of (1) chord modulus of elasticity (Young's) and (2) Poisson's ratio of molded concrete cylinders and diamond-drilled concrete cores when under longitudinal compressive stress. Chord modulus of elasticity and Poisson's ratio are defined in Terminology E 6.

1.2 The values stated in inch-pound units are to be regarded as the standard.

1.3 *This standard does not purport to address all of the safety concerns, if any, associated with its use. It is the responsibility of the user of this standard to establish appropriate safety and health practices and determine the applicability of regulatory limitations prior to use.*

2. Referenced Documents

2.1 ASTM Standards:²

C 31/C 31M Practice for Making and Curing Concrete Test Specimens in the Field

C 39/C 39M Test Method for Compressive Strength of Cylindrical Concrete Specimens

C 42/C 42M Test Method for Obtaining and Testing Drilled Cores and Sawed Beams of Concrete

C 174/C 174M Test Method for Measuring Thickness of Concrete Elements Using Drilled Concrete Cores

C 192/C 192M Practice for Making and Curing Concrete Test Specimens in the Laboratory

C 617 Practice for Capping Cylindrical Concrete Specimens

E 4 Practices for Force Verification of Testing Machines

E 6 Terminology Relating to Methods of Mechanical Testing

E 83 Practice for Verification and Classification of Extensometer System

E 177 Practice for Use of the Terms Precision and Bias in ASTM Test Methods

2.2 ASTM Adjuncts:

Compressometers (two drawings) and Extensometers (two drawings)³

3. Significance and Use

3.1 This test method provides a stress to strain ratio value and a ratio of lateral to longitudinal strain for hardened concrete at whatever age and curing conditions may be designated.

3.2 The modulus of elasticity and Poisson's ratio values, applicable within the customary working stress range (0 to 40 % of ultimate concrete strength), are used in sizing of reinforced and nonreinforced structural members, establishing the quantity of reinforcement, and computing stress for observed strains.

3.3 The modulus of elasticity values obtained will usually be less than moduli derived under rapid load application (dynamic or seismic rates, for example), and will usually be greater than values under slow load application or extended load duration, given other test conditions being the same.

4. Apparatus

4.1 *Testing Machine*—Use a testing machine capable of imposing a load at the rate and of the magnitude prescribed in 6.4. The machine shall conform to the requirements of Practices E 4 (Constant-Rate-of-Traverse CRT-Type Testing Machines section). The spherical head and bearing blocks shall conform to the Apparatus Section of Test Method C 39/C 39M.

4.2 *Compressometer*³—For determining the modulus of elasticity use a bonded (Note 1) or unbonded sensing device that measures to the nearest 5 millionths the average deformation of two diametrically opposite gage lines, each parallel to the axis, and each centered about midheight of the specimen.

³ Available from ASTM International Headquarters. Order Adjunct No. ADJC0469.

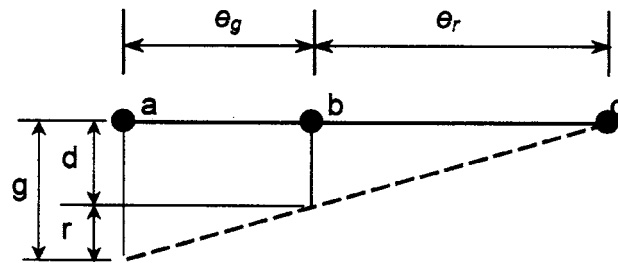
¹ This test method is under the jurisdiction of ASTM Committee C09 on Concrete and Concrete Aggregates and is the direct responsibility of Subcommittee C09.61 on Testing for Strength.

Current edition approved Aug. 10, 2002. Published October 2002. Originally approved in 1961. Last previous edition approved in 1994 as C469 – 94^{e1}.

² For referenced ASTM standards, visit the ASTM website, www.astm.org, or contact ASTM Customer Service at service@astm.org. For *Annual Book of ASTM Standards* volume information, refer to the standard's Document Summary page on the ASTM website.

The effective length of each gage line shall be not less than three times the maximum size of the aggregate in the concrete nor more than two thirds the height of the specimen; the preferred length of the gage line is one half the height of the specimen. Either use gage points embedded in or cemented to the specimen, and read deformation of the two lines independently; or use a compressometer (such as is shown in Fig. 1) consisting of two yokes, one of which (see B, Fig. 1) is rigidly attached to the specimen and the other (see C, Fig. 1) attached at two diametrically opposite points so that it is free to rotate. At one point on the circumference of the rotating yoke, midway between the two support points, use a pivot rod (see A, Fig. 1) to maintain a constant distance between the two yokes. At the opposite point on the circumference of the rotating yoke, the change in distance between the yokes (that is, the gage reading) is equal to the sum of the displacement due to specimen deformation and the displacement due to rotation of the yoke about the pivot rod (see Fig. 2).

4.2.1 Measure deformation by a dial gage used directly or with a lever multiplying system, by a wire strain gage, or by a linear variable differential transformer. If the distances of the pivot rod and the gage from the vertical plane passing through the support points of the rotating yoke are equal, the deforma-



- d = displacement due to specimen deformation
- r = displacement due to rotation of the yoke about the pivot rod
- a = location of gage
- b = support point of the rotating yoke
- c = location of pivot rod
- g = gage reading

FIG. 2 Diagram of Displacements

tion of the specimen is equal to one-half the gage reading. If these distances are not equal, calculate the deformation as follows:

$$d = g e_r / (e_r + e_g) \quad (1)$$

where:

- d = total deformation of the specimen throughout the effective gage length, $\mu\text{in.}$ (μm),
- g = gage reading, $\mu\text{in.}$ (μm),
- e_r = the perpendicular distance, measured in inches (millimetres) to the nearest 0.01 in. (0.254 mm) from the pivot rod to the vertical plane passing through the two support points of the rotating yoke, and
- e_g = the perpendicular distance, measured in inches (millimetres) to the nearest 0.01 in. (0.254 mm) from the gage to the vertical plane passing through the two support points of the rotating yoke.

Procedures for calibrating strain-measuring devices are given in Practice E 83.

NOTE 1—Although bonded strain gages are satisfactory on dry specimens, they may be difficult, if not impossible, to mount on specimens continually moist-cured until tested.

4.3 *Extensometer*³—If Poisson's ratio is desired, the transverse strain shall be determined (1) by an unbonded extensometer capable of measuring to the nearest 25 $\mu\text{in.}$ (0.635 μm) the change in diameter at the midheight of the specimen, or (2) by two bonded strain gages (Note 1) mounted circumferentially at diametrically opposite points at the midheight of the specimen and capable of measuring circumferential strain to the nearest 5 millionths. A combined compressometer and extensometer (Fig. 3) is a convenient unbonded device. This apparatus shall contain a third yoke (consisting of two equal segments) located halfway between the two compressometer yokes and attached to the specimen at two diametrically opposite points. Midway between these points use a short pivot rod (A', see Fig. 3), adjacent to the long pivot rod, to maintain a constant distance between the bottom and middle yokes. Hinge the middle yoke at the pivot point to permit rotation of the two segments of the yoke in the horizontal plane. At the opposite point on the

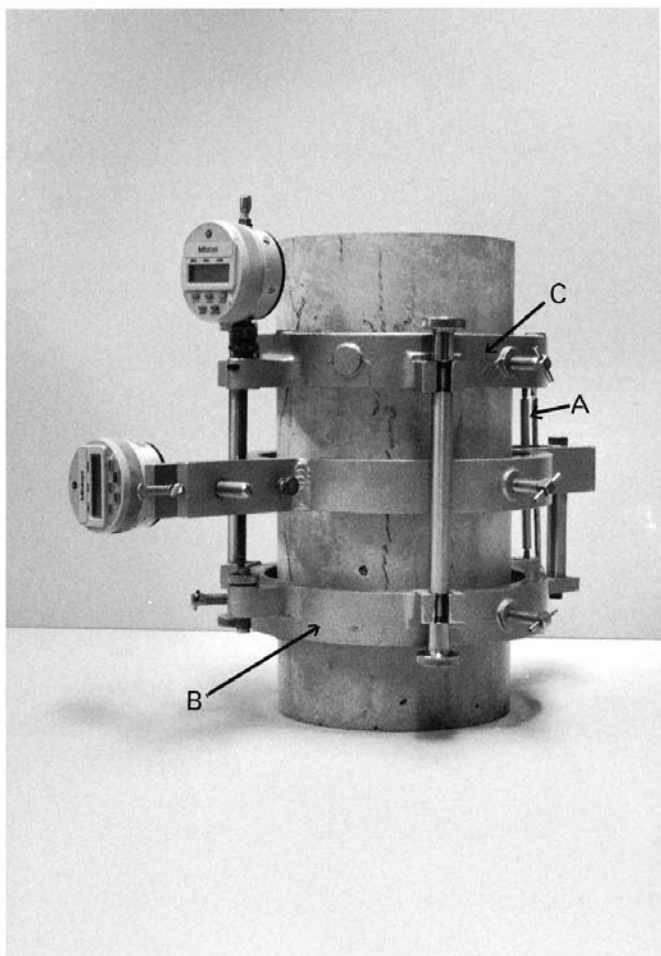


FIG. 1 Suitable Compressometer

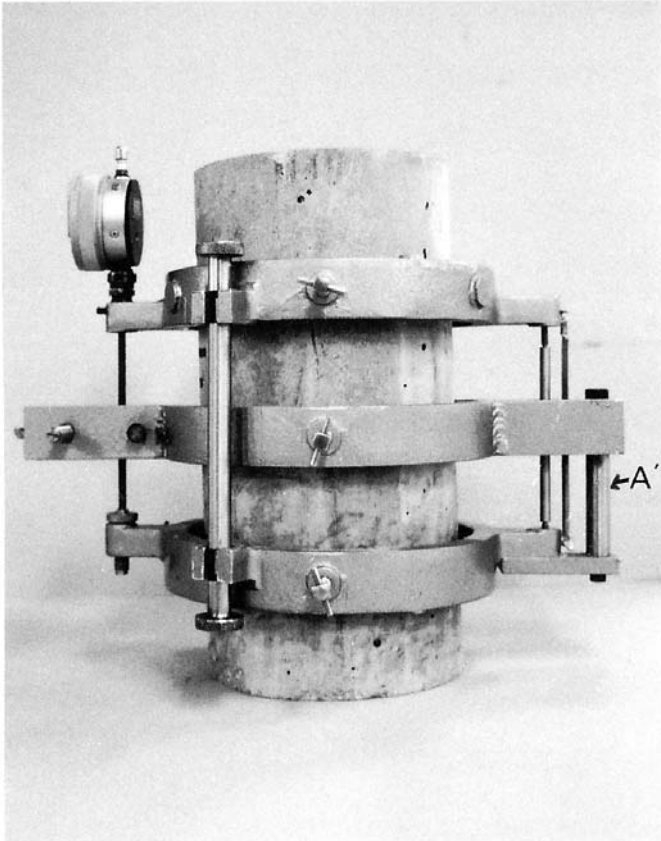


FIG. 3 Suitable Combined Compressometer-Extensometer

circumference, connect the two segments through a dial gage or other sensing device capable of measuring transverse deformation to the nearest 50 $\mu\text{in.}$ (1.27 μm). If the distances of the hinge and the gage from the vertical plane passing through the support points of the middle yoke are equal, the transverse deformation of the specimen diameter is equal to one-half the gage reading. If these distances are not equal, calculate the transverse deformation of the specimen diameter in accordance with Eq 2.

$$d' = g'e'_h / (e'_h + e'_g) \quad (2)$$

where:

d' = transverse deformation of the specimen diameter, $\mu\text{in.}$ (μm),

g' = transverse gage reading, $\mu\text{in.}$ (μm),

e'_h = the perpendicular distance, measured in inches (millimeters) to the nearest 0.01 in. (0.254 mm) from the hinge to the vertical plane passing through the support points of the middle yoke, and

e'_g = the perpendicular distance, measured in inches (millimeters) to the nearest 0.01 in. (0.254 mm) from the gage to the vertical plane passing through the support points of the middle yoke.

4.4 *Balance or Scale*, accurate to 0.1 lb (0.045 kg) shall be used if necessary.

5. Test Specimens

5.1 *Molded Cylindrical Specimens*—Mold test cylinders in accordance with the requirements for compression test speci-

mens in Practice C 192/C 192M, or in Practice C 31/C 31M. Subject specimens to the specified curing conditions and test at the age for which the elasticity information is desired. Test specimens within 1 h after removal from the curing or storage room. Specimens removed from a moist room for test shall be kept moist by a wet cloth covering during the interval between removal and test.

5.2 *Drilled Core Specimens*—Cores shall comply with the requirements for drilling, and moisture conditioning applicable to compressive strength specimens in Test Method C 42/C 42M, except that only diamond-drilled cores having a length-to-diameter ratio greater than 1.50 shall be used. Requirements relative to storage and to ambient conditions immediately prior to test shall be the same as for molded cylindrical specimens.

5.3 The ends of the test specimens shall be made perpendicular to the axis ($\pm 0.5^\circ$) and plane (within 0.002 in.). If the specimen as cast does not meet the planeness requirements, planeness shall be accomplished by capping in accordance with Practice C 617, or by lapping, or by grinding. It is not prohibited to repair aggregate popouts that occur at the ends of specimens, provided the total area of popouts does not exceed 10 % of the specimen area and the repairs are made before capping or grinding is completed (Note 2). Planeness will be considered within tolerance when a 0.002 in. (0.05 mm) feeler gage will not pass between the specimen surface and a straight edge held against the surface.

NOTE 2—Repairs may be made by epoxying the dislodged aggregate back in place or by filling the void with capping material and allowing adequate time for it to harden.

5.4 Measure the diameter of the test specimen by caliper to the nearest 0.01 in. (0.25 mm) by averaging two diameters measured at right angles to each other near the center of the length of the specimen. Use this average diameter to calculate the cross-sectional area. Measure and report the length of a molded specimen, including caps, to the nearest 0.1 in. (2.54 mm). Measure the length of a drilled specimen in accordance with Test Method C 174/C 174M; report the length, including caps, to the nearest 0.1 in. (2.54 mm).

6. Procedure

6.1 Maintain the ambient temperature and humidity as constant as possible throughout the test. Record any unusual fluctuation in temperature or humidity in the report.

6.2 Use companion specimens to determine the compressive strength in accordance with Test Method C 39/C 39M prior to the test for modulus of elasticity.

6.3 Place the specimen, with the strain-measuring equipment attached, on the lower platen or bearing block of the testing machine. Carefully align the axis of the specimen with the center of thrust of the spherically-seated upper bearing block. Note the reading on the strain indicators. As the spherically-seated block is brought slowly to bear upon the specimen, rotate the movable portion of the block gently by hand so that uniform seating is obtained.

6.4 Load the specimen at least twice. Do not record any data during the first loading. Base calculations on the average of the results of the subsequent loadings (Note 3).

NOTE 3—At least two subsequent loadings are recommended so that the repeatability of the test may be noted.

During the first loading, which is primarily for the seating of the gages, observe the performance of the gages (Note 4) and correct any unusual behavior prior to the second loading. Obtain each set of readings as follows: Apply the load continuously and without shock. Set testing machines of the screw type so that the moving head travels at a rate of about 0.05 in. (1.25 mm)/min when the machine is running idle. In hydraulically operated machines, apply the load at a constant rate within the range 35 ± 5 psi (241 ± 34 kPa)/s. Record, without interruption of loading, the applied load and longitudinal strain at the point (1) when the longitudinal strain is 50 millionths and (2) when the applied load is equal to 40 % of the ultimate load (see 6.5). Longitudinal strain is defined as the total longitudinal deformation divided by the effective gage length. If Poisson's ratio is to be determined, record the transverse strain at the same points. If a stress-strain curve is to be determined, take readings at two or more intermediate points without interruption of loading; or use an instrument that makes a continuous record. Immediately upon reaching the maximum load, except on the final loading, reduce the load to zero at the same rate at which it was applied. If the observer fails to obtain a reading, complete the loading cycle and then repeat it. Record the extra cycle in the report.

NOTE 4—Where a dial gage is used to measure longitudinal deformation, it is convenient to set the gage before each loading so that the indicator will pass the zero point at a longitudinal strain of 50 millionths.

6.5 It is not prohibited to obtain the modulus of elasticity and strength on the same loading provided that the gages are expendable, removable, or adequately protected so that it is possible to comply with the requirement for continuous loading given in Test Method C 39/C 39M. In this case record several readings and determine the strain value at 40 % of the ultimate by interpolation.

6.6 If intermediate readings are taken, plot the results of each of the three tests with the longitudinal strain as the abscissa and the compressive stress as the ordinate. Calculate the compressive stress by dividing the quotient of the testing machine load by the cross-sectional area of the specimen determined in accordance with 5.4.

7. Calculation

7.1 Calculate the modulus of elasticity, to the nearest 50 000 psi (344.74 MPa) as follows:

$$E = (S_2 - S_1)/(\epsilon_2 - 0.000050) \quad (3)$$

where:

- E = chord modulus of elasticity, psi,
- S_2 = stress corresponding to 40 % of ultimate load,
- S_1 = stress corresponding to a longitudinal strain, ϵ_1 , of 50 millionths, psi, and
- ϵ_2 = longitudinal strain produced by stress S_2 .

7.2 Calculate Poisson's ratio, to the nearest 0.01, as follows:

$$\mu = (\epsilon_{t2} - \epsilon_{t1})/(\epsilon_2 - 0.000050) \quad (4)$$

where:

- μ = Poisson's ratio,
- ϵ_{t2} = transverse strain at midheight of the specimen produced by stress S_2 , and
- ϵ_{t1} = transverse strain at midheight of the specimen produced by stress S_1 .

8. Report

8.1 Report the following information:

- 8.1.1 Specimen identification number,
- 8.1.2 Dimensions of specimen, in inches (or millimetres),
- 8.1.3 Curing and environmental histories of the specimen,
- 8.1.4 Age of the specimen,
- 8.1.5 Strength of the concrete, if determined,
- 8.1.6 Unit weight of the concrete, if determined,
- 8.1.7 Stress-strain curves, if plotted,
- 8.1.8 Chord modulus of elasticity, and
- 8.1.9 Poisson's ratio, if determined.

9. Precision and Bias

9.1 *Precision*—The single-operator-machine multibatch precision is ± 4.25 % (RIS %) max, as defined in Practice E 177, over the range from 2.5 to 4×10^6 psi (17.3 to 27.6×10^6 Pa); therefore, the results of tests of duplicate cylinders from different batches should not depart more than 5 % from the average of the two.

9.2 *Bias*—This test method has no bias because the values determined can only be defined in terms of the test method.

10. Keywords

10.1 compression testing; concrete; modulus of elasticity; Poisson's ratio

ASTM International takes no position respecting the validity of any patent rights asserted in connection with any item mentioned in this standard. Users of this standard are expressly advised that determination of the validity of any such patent rights, and the risk of infringement of such rights, are entirely their own responsibility.

This standard is subject to revision at any time by the responsible technical committee and must be reviewed every five years and if not revised, either reapproved or withdrawn. Your comments are invited either for revision of this standard or for additional standards and should be addressed to ASTM International Headquarters. Your comments will receive careful consideration at a meeting of the responsible technical committee, which you may attend. If you feel that your comments have not received a fair hearing you should make your views known to the ASTM Committee on Standards, at the address shown below.

This standard is copyrighted by ASTM International, 100 Barr Harbor Drive, PO Box C700, West Conshohocken, PA 19428-2959, United States. Individual reprints (single or multiple copies) of this standard may be obtained by contacting ASTM at the above address or at 610-832-9585 (phone), 610-832-9555 (fax), or service@astm.org (e-mail); or through the ASTM website (www.astm.org).